

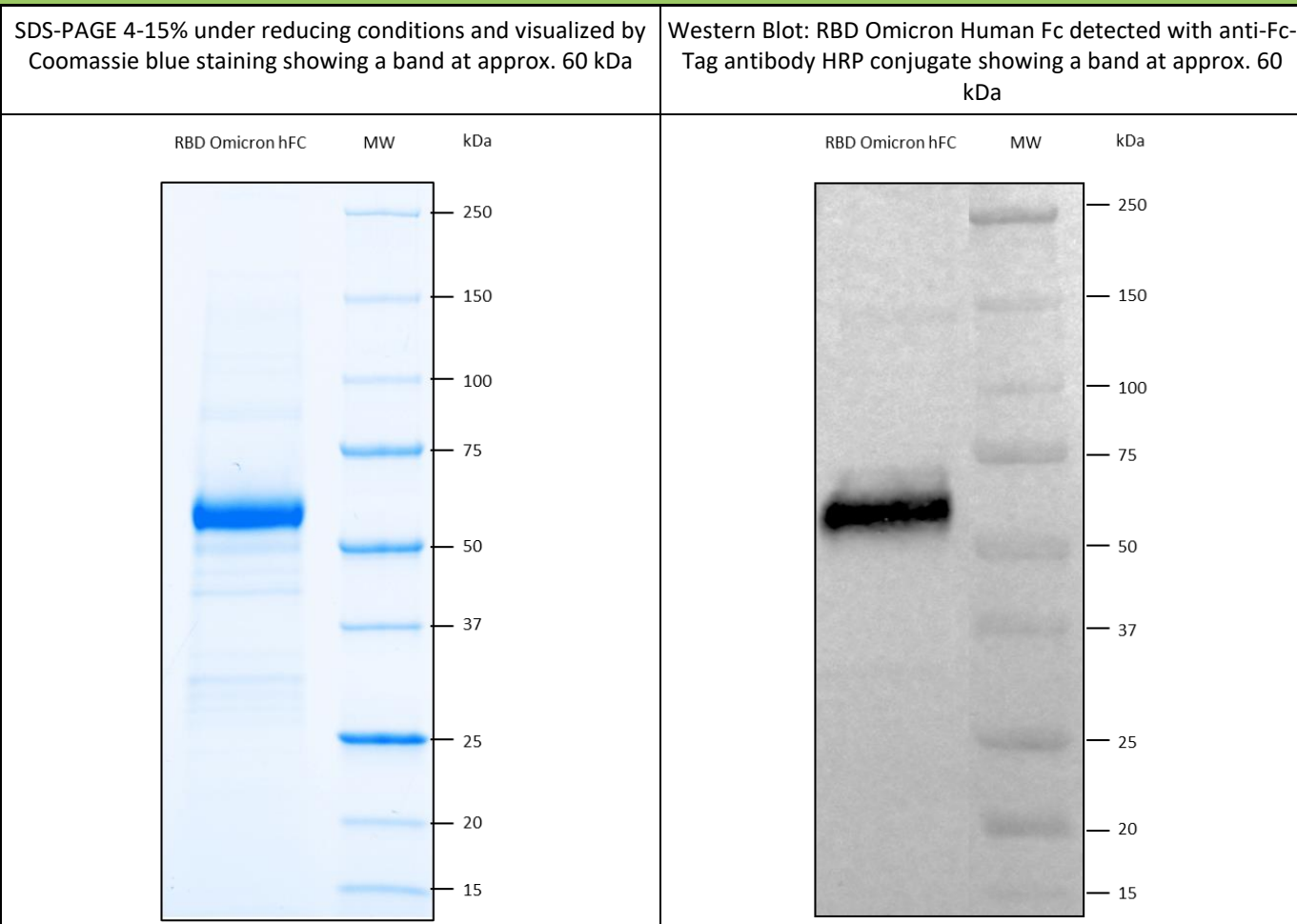
DESCRIPTION

<i>Description</i>	Recombinant Human Coronavirus SARS-CoV-2 Spike Protein S1 subunit, Receptor-Binding Domain (RBD), variant Omicron, Lineage B.1.1.529 (21K, South Africa)
<i>Sequence</i>	Native NCBI Accession Number: MN908947, Arg319-Phe541, with mutations G339D; S371L; S373P; S375F; K417N; N440K; G446S; S477N; T478K; E484A; Q493R; G496S; Q498R; N501Y; Y505H
<i>Expression system</i>	HEK293 cells
<i>Tag</i>	Human IgG1 Fc (Pro100-Lys330)
<i>Purification</i>	Affinity chromatography
<i>Extinction coefficient</i>	69760 M ⁻¹ .cm ⁻¹ Abs 0.1% (=1 g/l) 1.33 assuming all pairs of Cys residues form cystines
<i>Predicted Molecular Weight</i>	52 kDa

SPECIFICATIONS

<i>SDS Page</i>	Approx. 60 kDa (reducing conditions)
<i>Concentration</i>	1 mg/ml
<i>Purity</i>	> 85% by SDS PAGE gel
<i>Formulation</i>	Liquid PBS
<i>Stability and Storage</i>	Store at minimum -20°C. Avoid repeated freeze-thaw cycles

DATA



SARS-CoV-2 Spike Glycoprotein (S1) RBD variant Omicron Lineage B.1.1.529

Spike protein (S protein) is one of the four structural proteins of Coronavirus (SARS-Cov, SARS-Cov-2, MERS amongst others), S protein plays the most important role in viral attachment, fusion, and entry, and it serves as a target for development of antibodies, entry inhibitors and vaccines.

In the S protein, the Receptor Binding Domain (RBD) mediates viral entry of SARS-Cov and SARS-Cov-2 into host cells by its interaction with the membrane receptor ACE2 (Angiotensin-converting enzyme 2).

The variant lineage B.1.1.529 of SARS-Cov-2 was first identified in samples collected on November 11 2021 in Botswana and later (14th of November) in South Africa. The 26th of November, WHO named it "the Omicron variant" and was designated as a Variant of Concern.

This variant presents 15 mutations in the RBD. Since its discovery, cases of Omicron Variant were discovered all around the world.

Products Manufactured and Distributed by:
Diacclone SAS – Part of Medix Biochemica Group
6 Rue Dr Jean-François-Xavier Girod
BP 1985, 25020 Besançon Cedex
France
Tel +33 (0)3 81 41 38 38 Fax +33 (0)3 81 41 36 36
Email: info@diacclone.com www.diacclone.com